

## Full, Programmable Fax Session Control

### FaxLab Features and Benefits

#### ► Features

Full-featured fax traffic generator, recorder, analyzer and monitor

Call playback capability from send, receive or monitor mode

Point-and-click interface

Color page viewer and analyzer

Uses existing FaxTrap 4.0 or ChannelTrap

#### ► Benefits

Complete control over every aspect of the call

Easy test development

Shortens test cycles

Thorough analysis improves your product

Tailors the depth and breadth of analysis to suit your needs

#### ► Applications

During development, specific scripts focus on a particular event

Capture calls and playback to recreate problems for analysis

Test major functional requirements

Like any complex technology, facsimile protocols present challenges to developers and integrators – not just in development, but in testing as well. As the leading supplier of fax testing tools, QualityLogic understands these problems first hand; we have developed *and tested* three unique implementations of G3 facsimile. With FaxExpert, we have built the most versatile fax traffic generator, recorder and analyzer available.

FaxExpert is a complete test development and execution environment for fax protocols. FaxExpert is so flexible and powerful that virtually every aspect of a fax call can be manipulated. Testing facsimile capabilities has never been this comprehensive or cost-effective. FaxExpert can shorten test cycles, while improving the quality of your product.

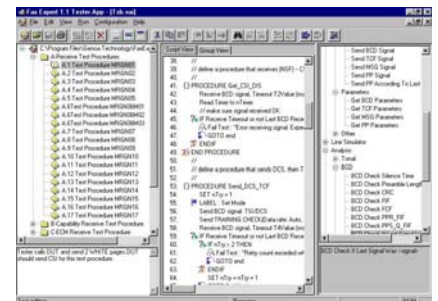
### ► Architecture

FaxExpert 1.11 is the third generation of QualityLogic fax test products, employing our newest client/server test architecture. This allows the configuration, control and analysis program to be located independently of the connection to the phone line.

FaxExpert is also based on the latest fax standards that include transmission of *color pages*. And because of its open architecture, FaxExpert can be modified quickly and easily to incorporate future protocol changes.

### ► Developing Test Cases

The ability to generate new test cases quickly is one of the most powerful features in FaxExpert. FaxExpert will allow the development of virtually any state machine based on T.30 signal types. You can use predefined templates in which the basics of a call are already laid out, or use data captured during a previously recorded fax call, thus creating a script that simulates either end of a fax communication.



If you're familiar with the T.30 protocol, you can build a new test case, even a complex one, by simply dragging and dropping any of the wide variety of base functions into the script. You can generate anything from basic linear scripts to complex scenarios that incorporate flow control, labels, and local and global variables.

With FaxExpert, you can assemble almost any signal in virtually any order, and you can modify nearly every element in each signal. This includes everything from the content of the fax message to the HDLC framing fields in the BCD signals. Errors can be introduced almost anywhere, as well.

## ▶ Test Management

FaxExpert employs several levels of test case organization and management. The test *case* defines what element is to be tested and the code necessary to perform the test. The test *job* is a combination of test cases organized according to type. Test jobs can be combined into test *suites*, collections of tests grouped for a specific purpose.

FaxExpert helps to automate the test process. A special set of functions allows FaxExpert to serve as the central control point of an automated test system, which can be incorporated into any environment supporting TCP/IP.

## ▶ Analysis

With the function selection interface, you can turn analysis of signal types and other call elements on or off, tailoring the depth and breadth of analysis according to your needs. During test execution, all bits transferred between FaxExpert and the device under test are recorded. From this data, the call is analyzed for conformance, according to the level of analysis you select.

To further facilitate analysis, both the raw data and FaxExpert's analysis of each call are kept in an Microsoft® Access compatible database file, allowing you to use information gathered by FaxExpert in whatever manner you wish.

Comprehensively testing your facsimile device has never been this easy. Total power, effortless control...*FaxExpert*.

## ▶ Ordering Information

F2001-K:	FaxExpert Kit
FaxExpert Kit contains:	
F2001-S:	FaxExpert Software
F2001-KEY:	FaxExpert Key
F2008-T	ChannelTrap Hardware

## ▶ Minimum System Requirements

- Pentium 100 MHz
- 16 MB memory
- VGA graphic board and display
- Windows 95/98, NT 4.0
- 6 MB hard disk space



Software Quality Services  
and Test Tools

Contact QualityLogic for more information or a proposal:

Phone: (805) 531-9030 ext. 35  
Toll Free: (800) 436-6292 ext. 35  
Email: [info@qualitylogic.com](mailto:info@qualitylogic.com)  
Web: [www.qualitylogic.com](http://www.qualitylogic.com)

QualityLogic Headquarters  
5401 Tech Circle  
Moorpark, CA 93021